

WALL COPING INSTALLATION GUIDE

Skyline Line Coping



Using recommended fixing screws, fix wall coping strap to structure at maximum 1.5metre centres or as recommended based on wind uplift calculations. Note. water proofing membrane by others not shown .



Insure that a minimum 31mm gap is left on the overhang.

Skyline Line Coping



Locate wall coping over half of the wall bracket at joint and rotate down.

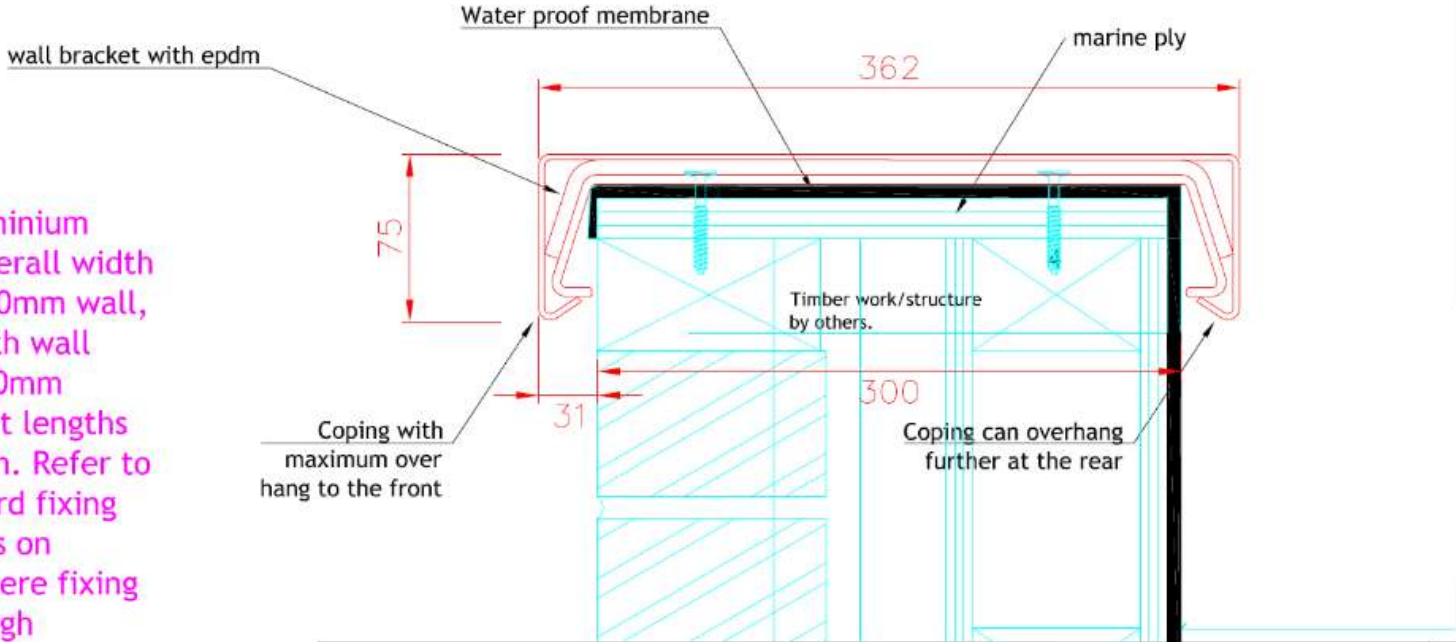


Apply pressure to the coping so as to clip the coping in place. Compressing the EPDM seal as shown. Repeat on the next length or fitting. Leave 4mm gap for expansion

Skyline Line Coping - indicative detail

Notes.

1. Alumasc Aluminium 362mm wide overall width to suit a 270-300mm wall, coping fixed with wall brackets at 1500mm centres. Straight lengths supplied in 3.0m. Refer to Alumasc standard fixing guide for details on installation. Where fixing penetrate through membrane use silicone sealant to seal eg. Dow corning 791.



 <p>ALUMASC EXTERIOR BUILDING PRODUCTS LTD White House Works, Bold Road, Sutton St Helens, Merseyside, WA9 4JG, UK Telephone: +44 (0)1744 648400 Facsimile: +44 (0)1744 648401 Website: www.alumasc-exteriors.co.uk</p>	Drawing title: Proposed Section showing Indicative coping		© Copyright reserved
	Detail is valid only when approved by the Architect / Contractor concerned		
	Drawing No: SP55036-D2	Scale: NTS	
	Revision:	Date:	

422mm wide coping illustrated