

Dektite® Product and Price Guide



Flashings for Metal Roofs



Dektite® Original

The Original watertight Flashing for Metal Roofs

The original watertight flashing for hot or cold flues and pipes on metal roofs. A tough weathertight seal and a strong flexible base.

Pipe External	Roof Pitch	Base Size Ø	Code		List Price	
			Grey EPDM	Grey EPDM	Red Silicone	Red Silicone
0-35mm	0-45°	92mm	DF100	7.38	-	-
5-65mm	0-40°	121mm	DF101	9.25	DF201	12.65
45-80mm	0-40°	156mm	DF102	12.22	DF202	17.39
5-127mm	0-40°	196mm	DF103	16.13	DF203	23.67
73-160mm	0-40°	238mm	DF104	20.87	DF204	30.70
108-190mm	0-40°	272mm	DF105	24.50	DF205	33.90
125-230mm	0-40°	318mm	DF106	29.35	DF206	44.10
150-280mm	0-40°	368mm	DF107	45.60	DF207	69.50
175-330mm	0-40°	418mm	DF108	54.36	DF208	82.63
254-483mm	0-40°	642mm	DF109	108.21	DF209	156.06



Dektite® Premium

Perfect for Flashing Pipes on Metal Roofs

The multi-application flashing in a highly durable EPDM or silicone, edged with a flexible aluminium band, flashes hot or cold flues and pipes on metal roofs. The square base fits any prepared hole on most roof profiles.



Dektite® Mini
for small penetrations

Pipe External	Roof Pitch	Base Size	Code		List Price		Code		List Price	
			Black EPDM	Black EPDM	Grey EPDM	Grey EPDM	Red Silicone	Red Silicone	Red Silicone	Red Silicone
0-35mm	0-45°	100 x 100mm	DFE100B	6.67	DFE100G	7.53	DFE200RE	8.67		
0-35mm	0-45°	100 x 100mm	*DFE100BS	7.00	DFE100GS	7.91	DFE200RES	9.10		
5-55mm	0-45°	139 x 139mm	DFE101B	8.36	DFE101G	9.45	DFE201RE	11.49		
5-55mm	0-45°	139 x 139mm	*DFE101BS	8.78	DFE101GS	9.92	DFE201RES	12.07		
5-76mm	0-45°	178 x 178mm	DFE102B	11.08	DFE102G	12.51	DFE202RE	15.69		
5-127mm	0-45°	221 x 221mm	DFE103B	14.58	DFE103G	16.47	DFE203RE	21.58		
75-175mm	0-45°	280 x 280mm	DFE104B	18.87	DFE104G	21.33	DFE204RE	28.27		
100-200mm	0-45°	310 x 310mm	DFE105B	20.95	DFE105G	23.70	DFE205RE	34.00		
125-230mm	0-45°	363 x 363mm	DFE106B	23.22	DFE106G	26.25	DFE206RE	39.95		
150-300mm	0-45°	456 x 456mm	DFE107B	45.38	DFE107G	51.23	DFE207RE	64.37		
170-355mm	0-45°	496 x 496mm	DFE108B	54.50	DFE108G	61.56	DFE208RE	85.70		
230-508mm	0-45°	681 x 681mm	DFE109B	73.01	DFE109G	82.50	DFE209RE	128.61		

*For use in solar applications



Dektite® Premium Multicable

Protects up to 12 cables and weatherproofs entry to any metal roof

A purpose made durable solution as required by MCS and suits most roof profiles

Cable External	Roof Pitch	Base Size	Code		List Price	
			Black EPDM	Black EPDM	Black EPDM	Black EPDM
4-8mm	Any	139 x 139mm	DFE101BM		9.98	

Flashings for Metal Roofs

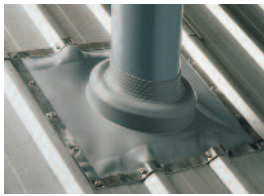


Dektite® EZi-Seal™

Forget the Silicone - Just screw it down

Features a revolutionary non-absorbant and non-porous sponge gasket that seals by compression, even in wet conditions, it hugs the roof line to provide a watertight seal without the need for silicone sealant

Pipe External	Roof Pitch	Base Size	Code	List Price
			Black EPDM	Black EPDM
0-35mm	0-45°	100 x 100mm	DFE100BEZ	8.47
5-55mm	0-45°	139 x 139mm	DFE101BEZ	10.63
5-76mm	0-45°	178 x 178mm	DFE102BEZ	14.07
5-127mm	0-45°	221 x 221mm	DFE103BEZ	18.52
75-175mm	0-45°	280 x 280mm	DFE104BEZ	23.97
100-200mm	0-45°	310 x 310mm	DFE105BEZ	26.27
125-230mm	0-45°	363 x 363mm	DFE106BEZ	27.87
150-300mm	0-45°	456 x 456mm	DFE107BEZ	54.46
170-355mm	0-45°	496 x 496mm	DFE108BEZ	65.49
230-508mm	0-45°	681 x 681mm	DFE109BEZ	87.61

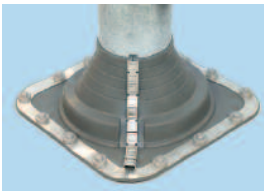


Dektite® Diverter

For Hi/Low Roof Pitches

No ponding or damming! The large base of the Dektite® Diverter dramatically reduces and diverts rain water back up that can occur on very low or high pitched roofs and deep ribbed roofing profiles. No need to cut around pipes, just quick straight lines for the square base.

Pipe External	Roof Pitch	Base Size	Code	List Price	Code	List Price
			Grey EPDM	Grey EPDM	Red Silicone	Red Silicone
75-155mm	0-60°	410 x 360mm	DF602	34.03	DF702	52.35
114-254mm	0-60°	485 x 460mm	DF603	57.83	DF703	85.08
254-406mm	0-60°	708 x 635mm	DF605	151.69	DF705	172.79
380-610mm	0-60°	1006 x 905mm	DF606	211.22	DF706	308.20
235-425mm	0-40°	750 x 660mm	RFS4	151.69	-	-

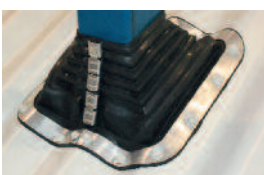


Dektite® Combo

Flash over or around

Use as standard Dektite, or when retrofit is required cut and fit around pipe and join with clips.

Pipe External	Roof Pitch	Base Size	Code	List Price	Code	List Price	Code	List Price
			Black EPDM	Black EPDM	Grey EPDM	Grey EPDM	Red Silicone	Red Silicone
5 - 60mm	0-40°	139 x 139mm	DC101B	8.14	DC101G	9.25	DC201RE	12.65
45 - 85mm	0-40°	177 x 177mm	DC102B	10.75	DC102G	12.22	DC202RE	17.39
5 - 127mm	0-40°	218 x 218mm	DC103B	14.19	DC103G	16.13	DC203RE	23.67
75 - 175mm	0-40°	285 x 285mm	DC104B	18.37	DC104G	20.87	DC204RE	30.07
108 - 190mm	0-40°	365 x 365mm	DC105B	21.56	DC105G	24.50	DC205RE	33.90
125 - 230mm	0-40°	365 x 365mm	DC106B	25.83	DC106G	29.35	DC206RE	44.10
150 - 280mm	0-40°	454 x 454mm	DC107B	40.13	DC107G	45.60	DC207RE	69.50
175 - 330mm	0-40°	454 x 454mm	DC108B	47.84	DC108G	54.36	DC208RE	82.63
240 - 503mm	0-40°	685 x 685mm	DC109B	95.22	DC109G	108.21	DC209RE	156.06
400 - 750mm		995 x 965mm	DC110B	365.24	-	-	-	-
25 clips	-	Box	-	10.95	-	10.95	-	10.95



Dektite® Combo Square

Specifically designed for square penetrations from 20mm - 120mm. Suitable for standard or retrofit applications.

Pipe External	Roof Pitch	Base Size	Code	List Price
			Black EPDM	Black EPDM
20 - 125mm	0-45°	216 x 216mm	DCS103B	16.35
25 clips	-	Box	-	10.95

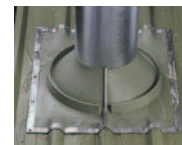
Flashings for Metal Roofs



Dektite® Retrofit™

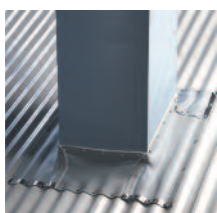
For repairs and difficult-to-access pipes

Purpose designed for flashing roof penetrations where the flashing cannot be lowered over the pipe, but needs to go around. The unique patented zip lock does not require separate clips - just clamp it together! Also available with a diverter tray.



Dektite® Retrofit™
Diverter™

Pipe External	Roof Pitch	Base Size Ø	Code		List Price	
			Black EPDM	Black EPDM	Grey EPDM	Grey EPDM
20-70mm	0-40°	160mm	RF801B	15.82	RF801G	15.82
50-185mm	0-40°	273mm	RF802B	31.83	RF802G	31.83
85-255mm	0-40°	369mm	RF803B	60.33	RF803G	60.33
235-425mm	0-40°	780 x 680mm	-	-	RFS4	151.69

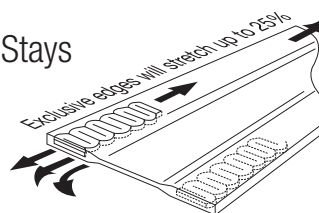


Ideal for flashing square ducts and chimneys

Dekstrip® Flashing

Stretches to any shape, Seals and Stays

The unique and patented internal aluminium strip allows the forming of almost any shape to seal and waterproof. Use with butyl mastic sealant and self-drilling screws to seal pipes, ducts, skylights, chimneys, bullnose and curved roofing profiles.



Great for large round pipes



Excellent for curved profiles

Width	Length	Code		List Price
		Grey TPE	Grey TPE	Grey TPE
180mm	23m	DS23-180		514.08
235mm	10m	DS10-235		261.79
305mm	10m	DS10-305		310.59
450mm	15m	DS15-450		471.24
235mm	3m	DS3-235		89.10



Dektite® fixing kits

Dektite fixing kits are designed for use with Deks EPDM and Silicone flashings on metal roofs. The DFK1 kit (As shown) contains 1 x 75ml tube of low modulus Silicone, 25 x self-drilling screws, 25 x colour caps (silver) 1 x fixing instruction leaflet.

The DFK2 kit contains 3 x 75ml tube of low modulus silicone, 75 x self-drilling screws, 75 x colour caps (silver) and 1 x fixing instruction leaflet.

On the back page of the instruction leaflet is a table which indicates which kit is required for each size of flashing.

Code	List Price
DFK 1	12.85
DFK 2	24.63

Flashings for Flat Membrane and Bitumen Roofs



FlatSeal™

Ideal for Flat and Low pitch Roofs with Single Ply or Bitumen Coverings

No special tools or fittings are needed - FlatSeal EPDM snaps tight to pipe without clips. Seals to roof with hot or cold liquid bitumen - refer to FlatSeal brochure for installation guide. Black EPDM for maximum UV and Ozone resistance.

Pipe External	Base Size Ø	Code		List Price
		Black EPDM	Black EPDM	Black EPDM
25 - 175mm	345mm	FS25-175		13.01

Flashings for Tile and Slate Roofs



Seldek® Aluminium™

Installs in a flash on Tile or Slate Roofs

The SELDEK® Aluminium™ won't stain or corrode roofs and gutters. The EPDM cone, which is trimmed on site to fit, is ingeniously locked to a high grade and malleable 99.9% pure aluminium base. The fast economical way to flash a tile roof.

Pipe External	Roof Pitch	Base Size	Base Type	Code		List Price	
				Black EPDM	Black EPDM	Black EPDM	Black EPDM
12 - 70mm	0-45°	500 x 600mm	Aluminium	SDA100			34.17
50 - 170mm	0-45°	500 x 600mm	Aluminium	SDA101			25.93
110 - 200mm	0-45°	600 x 600mm	Aluminium	SDA102			36.12
160 - 300mm	0-45°	764 x 764mm	Aluminium	SDA103			69.21
300 - 450mm	0-45°	956 x 956mm	Aluminium	SDA104			110.59



Seldek® Nu-Lead®

No more concern about Unprotected Lead

SELDEK® Nu-Lead™ has been developed for use where the handling of lead and associated environmental issues are of concern. Combines a long-life, weather-resistant EPDM cone with a grey primed acrylic coated lead base. The unique thermo-baked coating does not affect the lead's malleability, and prevents leaching onto the roof and its gutters, downpipes and the water table.

Pipe External	Roof Pitch	Base Size	Base Type	Code		List Price	
				Black EPDM	Black EPDM	Black EPDM	Black EPDM
12 - 70mm	0-45°	490 x 410mm	Nu-Lead	SNL100			55.45
50 - 170mm	0-45°	600 x 450mm	Nu-Lead	SNL101			73.55
175 - 330mm	0-45°	850 x 550mm	Nu-Lead	SNL103			115.31



Solardek™

The speciality Flashing for Solar Panels

The purpose designed SolarDek™ provides the safest, most efficient method of flashing solar thermal pipes and cables on tile and slate roofs.

SolarDek™ features the Nu-Lead® or aluminium base neither of which will not stain or corrode the roof, together with long-life Dektite® EPDM or grey silicone cone ideally suited to solar thermal pipe sizes.

Pipe External	Roof Pitch	Base Size	Base Type	Code		List Price	
				Black EPDM	Black EPDM	Grey Silicone	Grey Silicone
0 - 35mm	0-45°	490 x 410mm	Nu-Lead	DNL100B	55.45	DNL200G	55.45
0 - 35mm	0-45°	450 x 600mm	Aluminium	SDA MINI	34.17	-	-

The Dektite DFE 100 and DFE 101 are recommended for use with metal roofs and are available in black or grey EPDM or red silicone and are also available with cable nipples for use in solar applications (See Dektite Premium).

Red and grey Silicone will withstand constant temperature at the roofline of -50°C to 200°C and up to 250°C intermittently
EPDM will withstand constant temperature at the roofline of -50°C to 115°C and up to 150°C intermittently



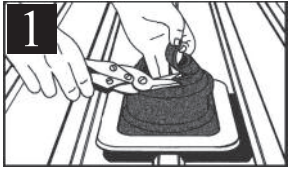
Dektite® Multicable Solar Flashing

The speciality flashing for solar PV cables on tile or slate roofs

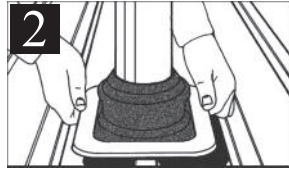
Allows up to 10 cables to be taken effectively through any tile or slate roof - Avoids risk of damage or pressure on cables by isolating from tiles or slates and provides a complete weatherproof seal. Black EPDM cone, features Nu-Lead® acrylic coated lead base.

Cable External	Roof Pitch	Base Size	Base Type	Code		List Price	
				Black EPDM	Black EPDM	Black EPDM	Black EPDM
4 - 8mm	Any	490 x 410mm	NuLead	DNLS10MB			55.45
4 - 8mm	Any	450 x 600mm	Aluminium	SDA10MB			36.75

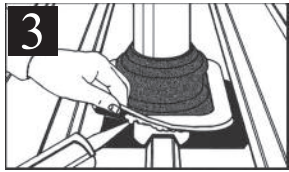
Dektite® installation instructions



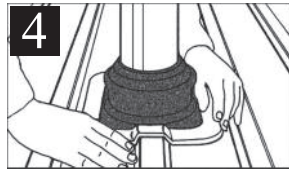
1 Cut Dektite® cone where indicated for the relevant pipe size



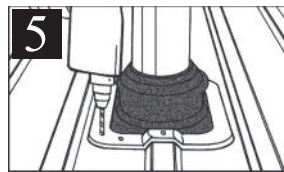
2 Slide Dektite® flashing down over pipe. Water can be used as a lubricant



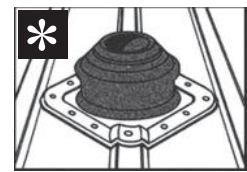
3 Apply neutral cure silicone sealant on underside of flange



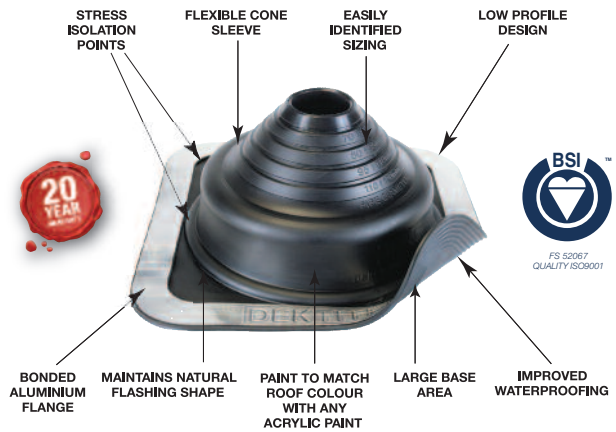
4 Press pipe flashing into contours of roof panel



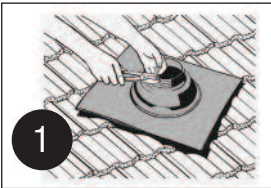
5 Fasten flashing to surface with self-tapping or self-drilling screws; or selected pop rivets



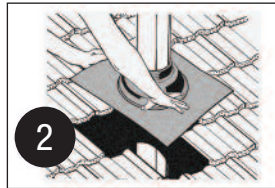
Use a Dektite® on the 'diamond' or bias for enlarged holes and penetrations on steep pitched roofs or deep contours



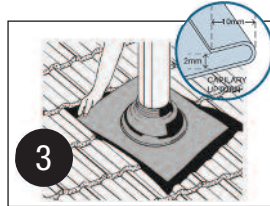
Seldek® installation instructions



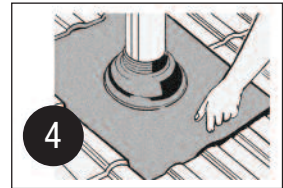
1 Read down the cone to determine the correct cutting ring for the pipe diameter, and trim the cone to suit using sharp tin snips or scissors.



2 Slide down pipe using water as a lubricant. NB. Apply pressure to the cone only, do not pull down using the flashing base



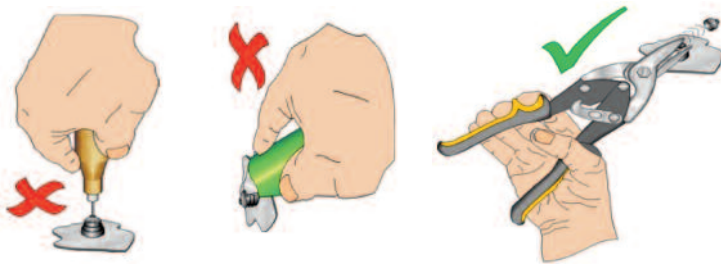
3 Place upper edge of the base under tiles, form an anti-capillary fold where necessary.



4 Hand dress the apron for a professional finish. Where the flashing is used with any product which has a projecting seam use silicone sealant at the point where the seam penetrates the top of the flashing.

Installation of flashings with cable nipples

The cable passage nipples are the same on each of the different solar flashings. Sharp tin snips or scissors must be used to ensure a neat, parallel cut at the desired position on the nipple. Do not use any sharp instruments, or any other tool including craft knives, to puncture a hole.



The following flashings have cable nipples

Dektite Flashings for solar pipes and cables	
Metal Roofs	Tile and Slate roofs
DFE 100 BS	DNL100B
DFE 100 GS	DNL200RE
DFE 200 RES	SDA MINI
DFE 101 BS	DNLS10MB
DFE 101 GS	SDA10MB
DFE 201 RES	